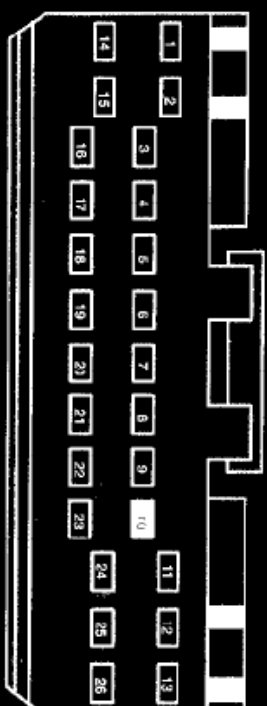


* EXCURSION

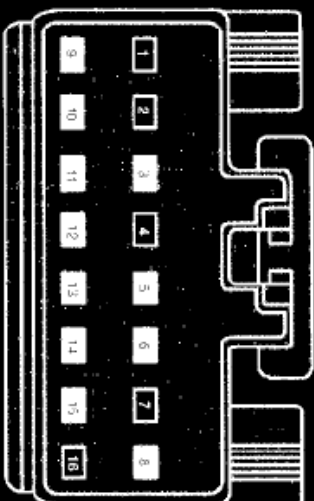


C240a

GENERIC ELECTRONIC MODULE (GEM)

PIN	CIRCUIT	CIRCUIT FUNCTION
1	686 (TN/RD)	Washer Pump Control
2	647 (GY/LB)	Wirdshield Wiper High/Low Relay Control
3	646 (YE/WH)	Wirdshield Wiper Brake/Run Relay Control
4	85 (BN/LB)	Safety Belt Warning Switch Input
5	346 (BK/WH)	Left and Right Rear Door Ajar Switch Input
6	680 (LB/OG)	Wirdshield Wiper Interval Delay/Wash Input
7	162 (LG/RD)	Park Brake Switch Input
8	1083 (LB/BK)	Air Bag Tone Request Input
9	870 (VT/YE)	Electronic Shift Control Encoder Ground Return
10	-	NOT USED
11	433 (DG/OG)	Door Ajar Indicator Output
12	977 (VT/WH)	Brake Warning Indicator Output
13	450 (DG/LG)	Fasten Safety Belt Indicator Output
14	671 (LB)	Front Wiper Motor Park Sense Input
15	158 (BK/VT)	Ignition Key Warning Switch Input
16	344 (BK/YE)	Left Door Ajar Input
17	257 (WH/RD)	Park/Head Lamps ON Input
18	640 (RD/YE)	Ignition (Hot in Run or Start)
19	345 (BK/VT)	Right Door Ajar Input
20	682 (DB)	Wiper Switch Signal Return
21	512 (TN/LG)	Brake Fluid Level Input 1
22	*485 (PK/BK)	Rear Wiper Switch Input
23	684 (PK/YE)	Wirdshield Wiper Mode Select Switch Input
24	531 (DG/YE)	Brake Fluid Level Input 2
25	70 (LB/WH)	ISO 9141 Diagnostic Link
26	676 (PK/OG)	Ground

EXCURSION

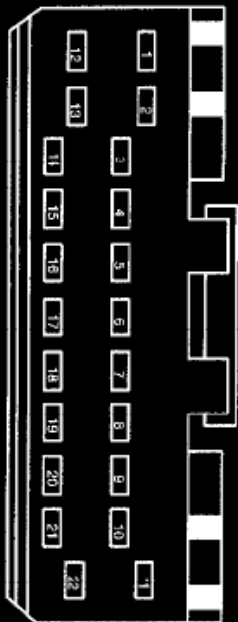


C240B

GENERIC ELECTRONIC MODULE (GEM)

PIN	CIRCUIT	CIRCUIT FUNCTION
1	78 (LB/YE)	Keypad Button 1/2 Input
2	124 (BN)	Keypad Common (Ground)
3	-	NOT USED
4	79 (LG/RD)	Keypad Button 3/4 Input
5	-	NOT USED
6	-	NOT USED
7	121 (YE/BK)	Keypad Button 5/6 Input
8	-	NOT USED
9	-	NOT USED
10	122 (YE)	NOT USED
11	-	NOT USED
12	-	NOT USED
13	123 (RD)	NOT USED
14	-	NOT USED
15	-	NOT USED
16	1013 (BN/LG)	Keypad Illumination Power

• EXCURSION

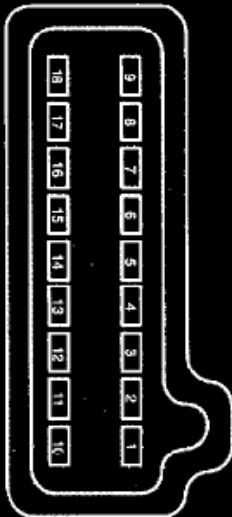


C240c

GENERIC ELECTRONIC MODULE (GEM)

PIN	CIRCUIT	CIRCUIT FUNCTION
1	463 (FD/WH)	Neutral Sense Input
2	700 (WH/VT)	Liftgate Ajar Input
3	780 (CB)	4 Wheel Drive Mode Switch Input
4	465 (WH/LB)	4 Wheel Drive Mode Switch Reference (Ground)
5	976 (DG)	Encoder Power Output
6	605 (FD)	4x2 Center Axle Solenoid Control
7	145 (GY/BK)	4x4 Center Axle Solenoid Control
8	975 (BN/YE)	4x4 Low Range Indicator Control
9	210 (LB)	4x4 High Range Indicator Control
10	782 (BN/WH)	Low to High Relay Control
11	781 (OG/LB)	High to Low Relay Control
12	810 (FD/LG)	Brake Pedal Position (BPP) Switch Input
13	119 (PK/YE)	All Door Lock Relay Output
14	120 (PK/LG)	All Door Unlock Relay Output
15	771 (VT/YE)	Contact Plate A
16	763 (OG/WH)	Contact Plate P
17	764 (BN/WH)	Contact Plate B
18	770 (WH)	Contact Plate C
19	* 591 (LG)	Rear Wiper Relay Control
20	7 (LG/YE)	Park Lamp Flash Relay Output
21	164 (VT/LB)	Driver Door Lock Relay Output
22	* 488 (DG)	Rear Washer Relay Control

* PICKUP
** EXCURSION

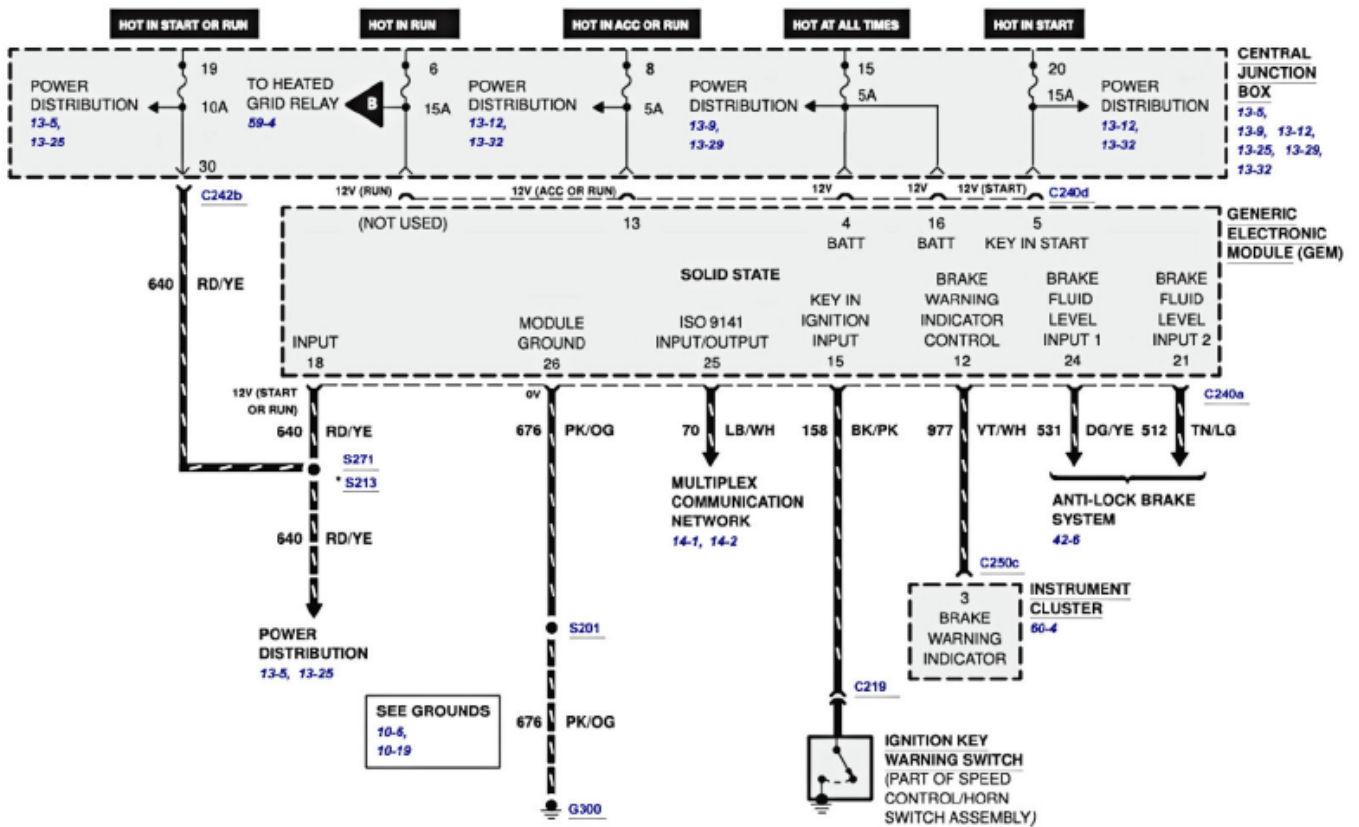


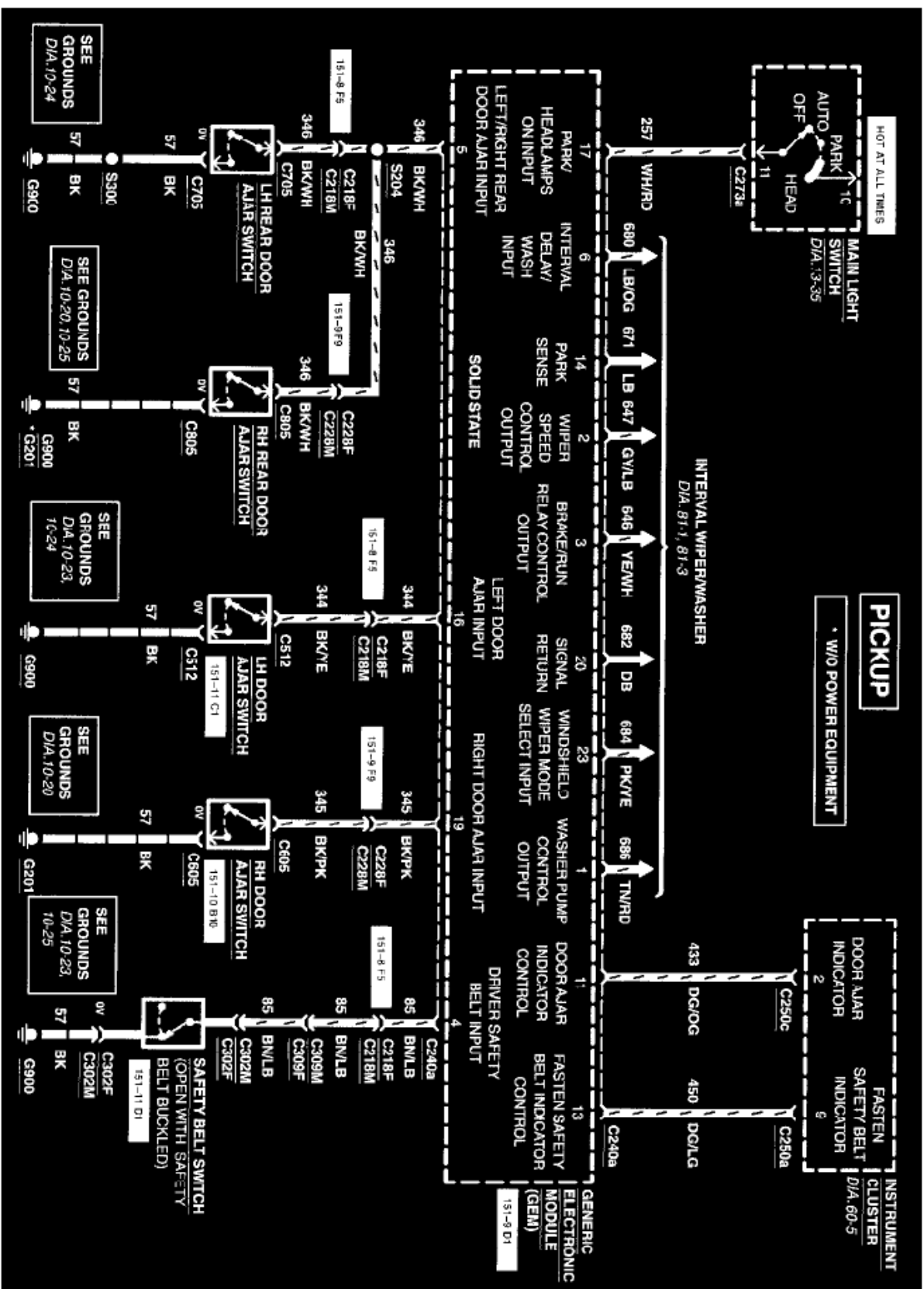
C240d

GENERIC ELECTRONIC MODULE (GEM)

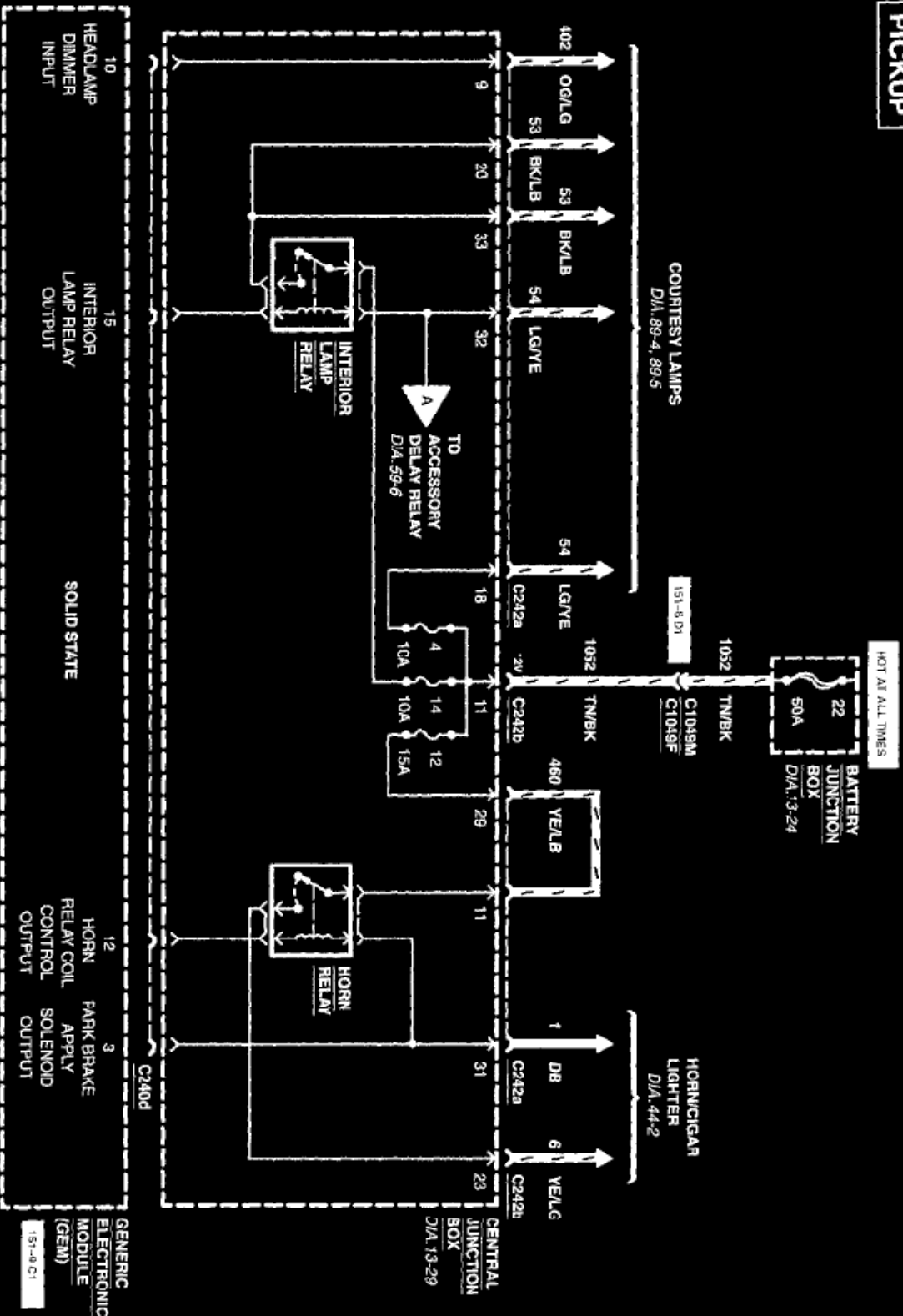
PIN	CIRCUIT FUNCTION
1	Battery Saver Relay Control
2	One Touch Down Relay Control
3	*Ignition Input (Hot in Run)
4	Ignition Input (Hot at All Times)
5	*Ignition Input (Hot in Start)
6	Rear Window Defrost Switch Input
7	LH Window Motor Current Sense (LOW)
8	LH Window Switch Down Input
9	One Touch Down Switch Input
10	Headlamp Interior Switch
11	Accessory Delay Relay Control
12	Rear Window Defrost Relay Control
13	Ignition Input (Hot in Acc or Run)
14	* Heated Grid Relay Control
15	**Horn Relay Control
16	Interior Lamp Relay Coil Control
17	Ignition Input (Hot at All Times)
18	LH Window Motor Current Sense (High) Vehicle Speed (+) Input

REVISED

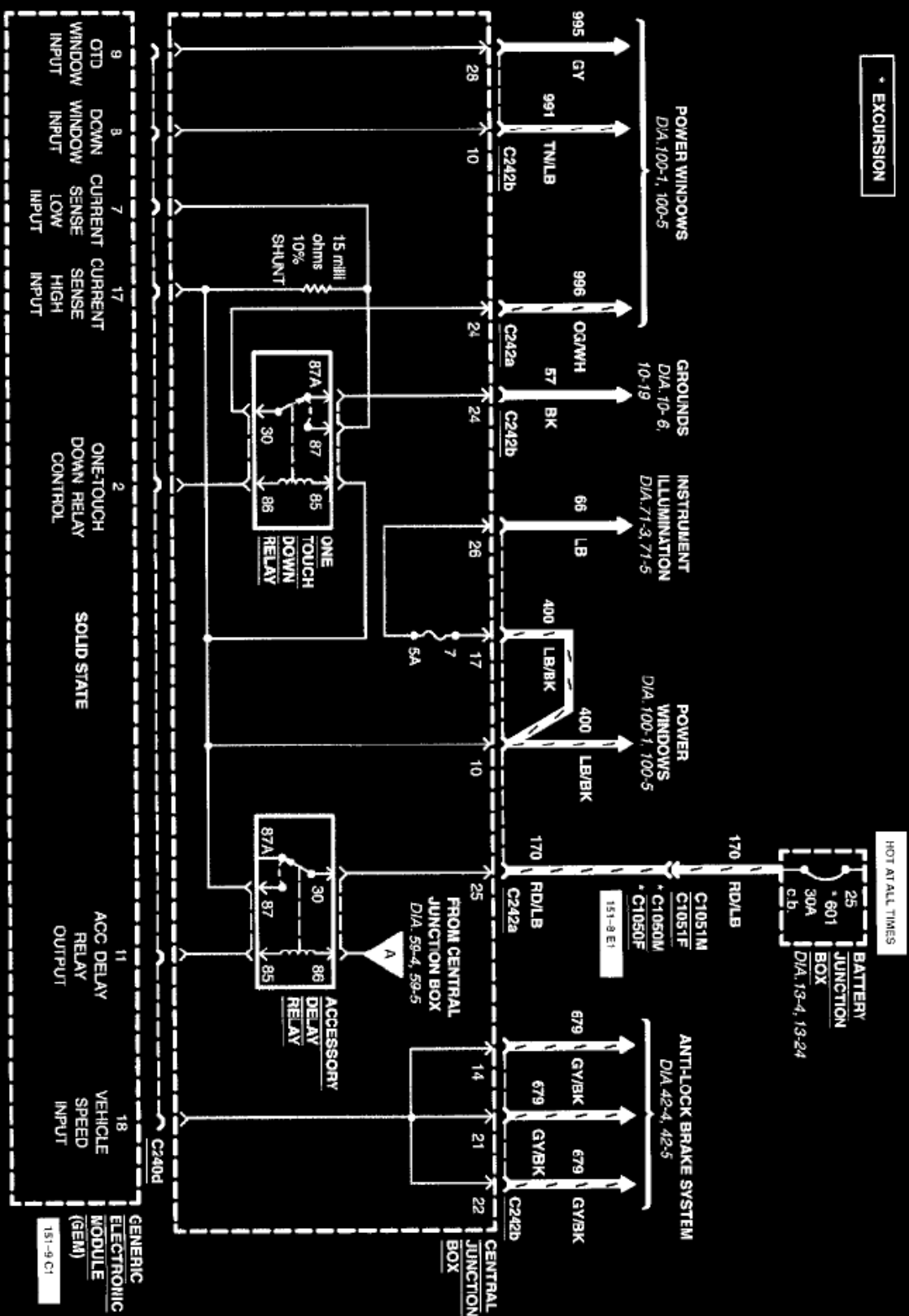


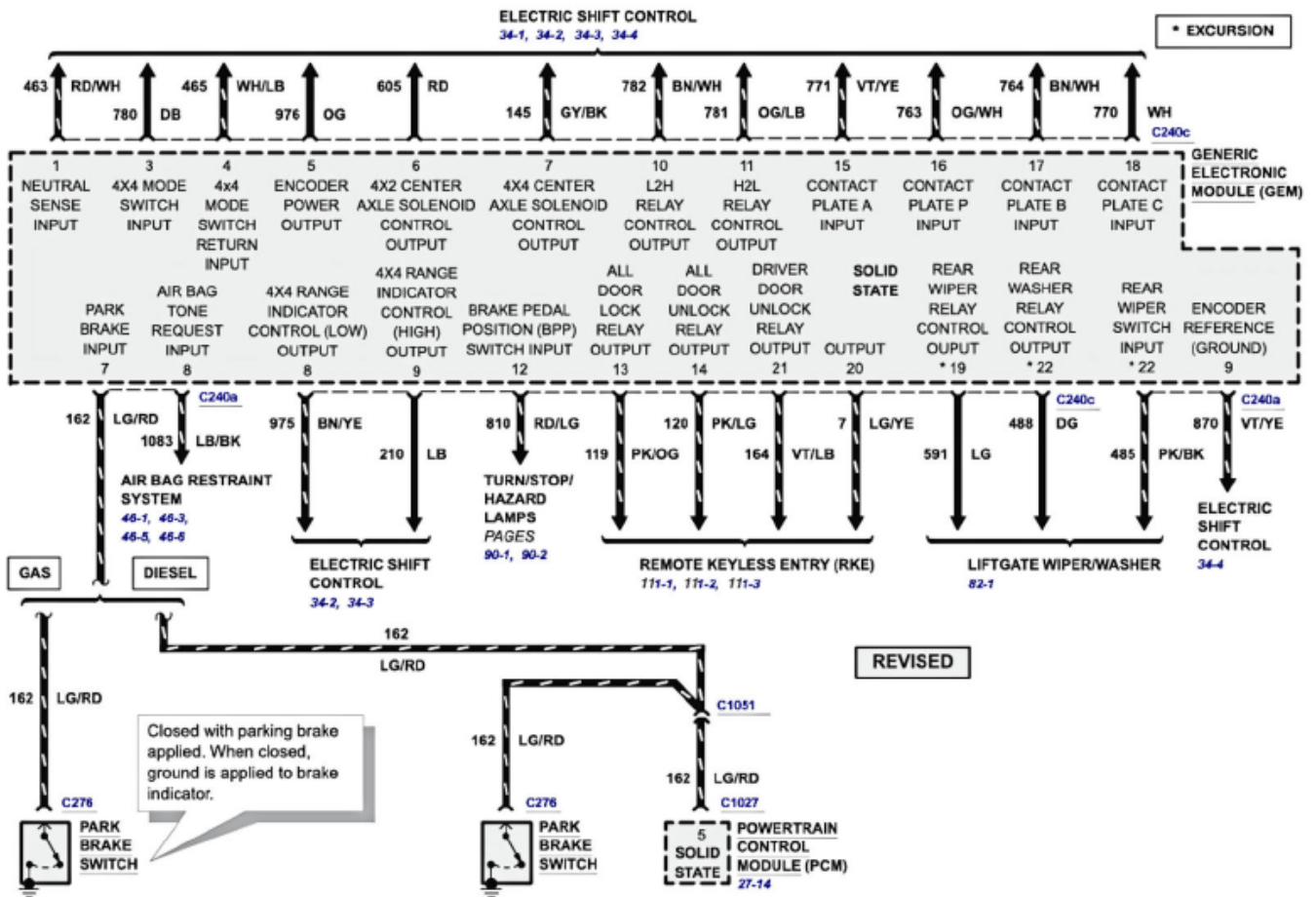


PICKUP



• EXCURSION





Multifunction Electronic Control Modules: Service Precautions

CAUTION:

- ^ Prior to removal of the GEM, it is necessary to upload module configuration information to a diagnostic tool. This information needs to be downloaded into the new module once installed.
- ^ Use care when removing the instrument panel steering column cover or damage to the cover locating tab may occur.
- ^ Once the new GEM is installed, it is necessary to download the module configuration information from the diagnostic tool into the new module.